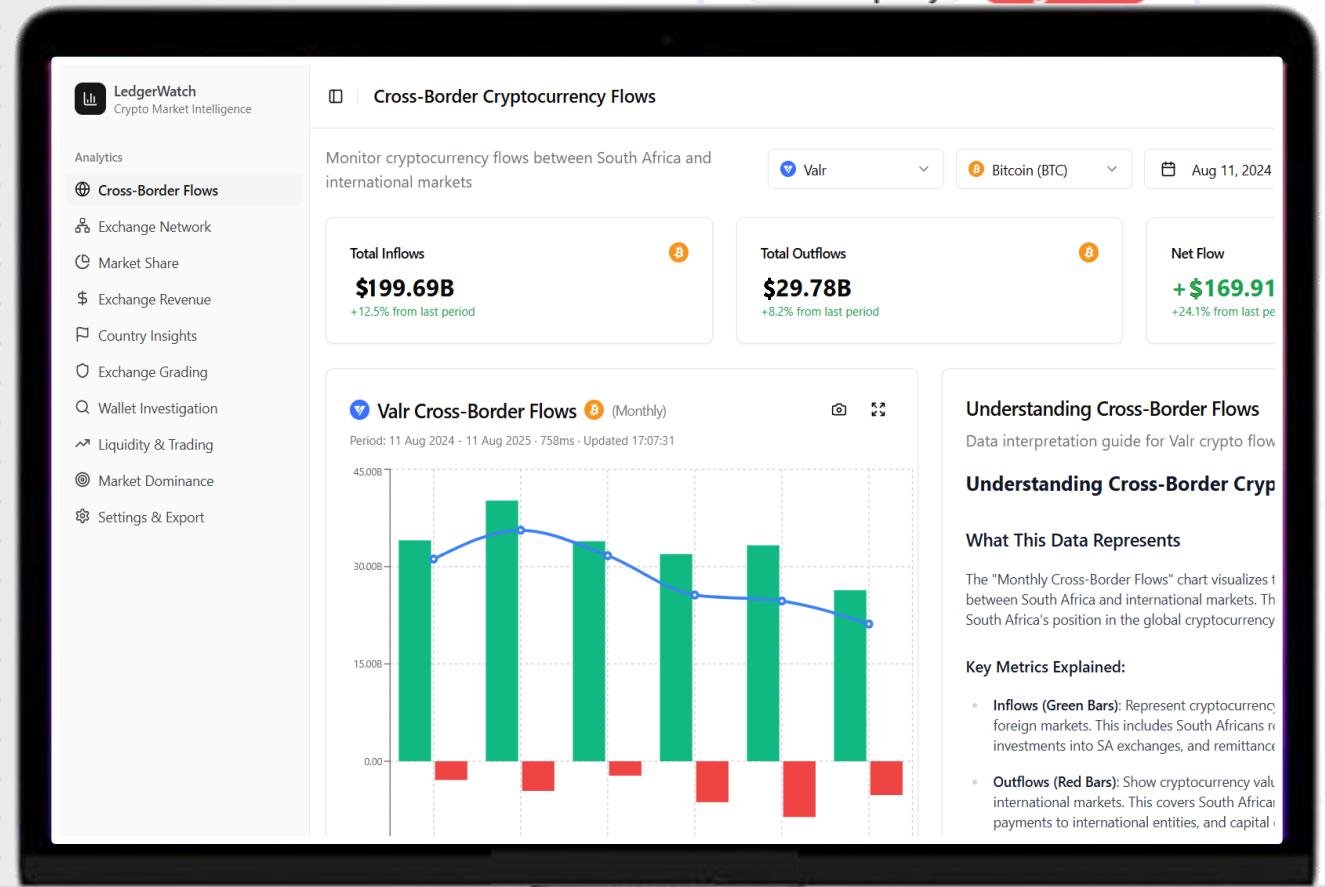




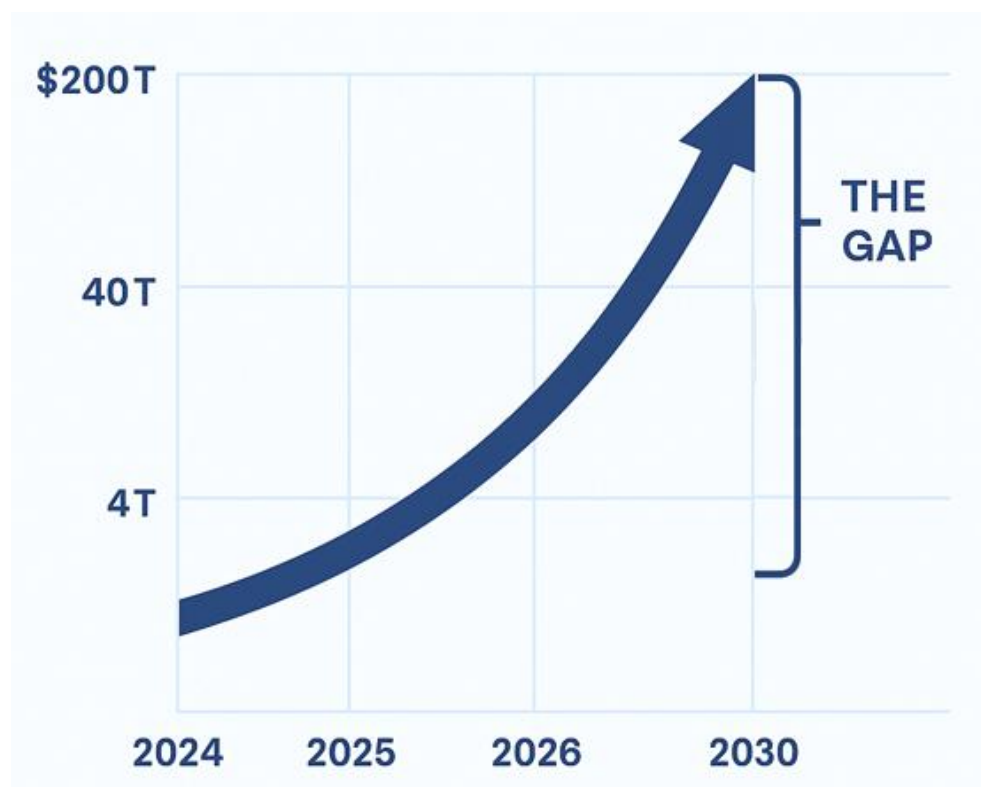
Sixpence

LedgerCore & Goldman Sachs

Unlocking Institutional-Grade Digital
Asset Infrastructure



The Institutional Digital Asset Opportunity



The digital asset market is undergoing explosive growth – with global market capitalization projected to **exceed \$200 trillion by 2030**. Regulatory certainty is improving across key jurisdictions like the US and EU, unlocking new use cases for institutional finance.

Institutions are entering the space with serious intent – deploying capital, tokenizing real-world assets, and building systems for custody, payments, and settlement.

To seize this momentum, they require solutions that meet the demands of compliance, audit, and operational control – and [LedgerCore](#) positions itself as the trusted foundation powering that adoption.

Stablecoins

The First Frontier

Stablecoins are the most mature and widely adopted digital asset use case in institutional finance today, already facilitating over \$8 trillion in annual transaction volume.

Their growing role in payments, settlements, and treasury flows makes them a critical infrastructure layer. Regulatory frameworks like **MiCA** (EU) and **GENIUS** (USA) are taking shape globally, accelerating compliant adoption.

Yet institutions still lack the tools to see beneath the surface – to monitor stablecoin reserves, flows, and counterparties with audit-grade visibility.

LedgerCore bridges this gap by transforming raw stablecoin activity into structured, compliance-ready intelligence, making it easier to operate securely in a tokenized economy.



The Problem

Blockchain data is highly fragmented, inconsistent, and operationally unusable for traditional financial institutions. These organizations face a series of critical challenges when engaging with raw blockchain data.

Fragmented Infrastructure

- Data is scattered across multiple blockchains and exchanges.
- Each requires separate full nodes, APIs, and specialized engineering effort.

Non-Standardized, Raw Formats

- Blockchains use differing data models (e.g., UTXO vs. account-based).
- Exchange APIs vary and lack uniformity.
- No built-in financial context – no clear debits, credits, or economic meaning.

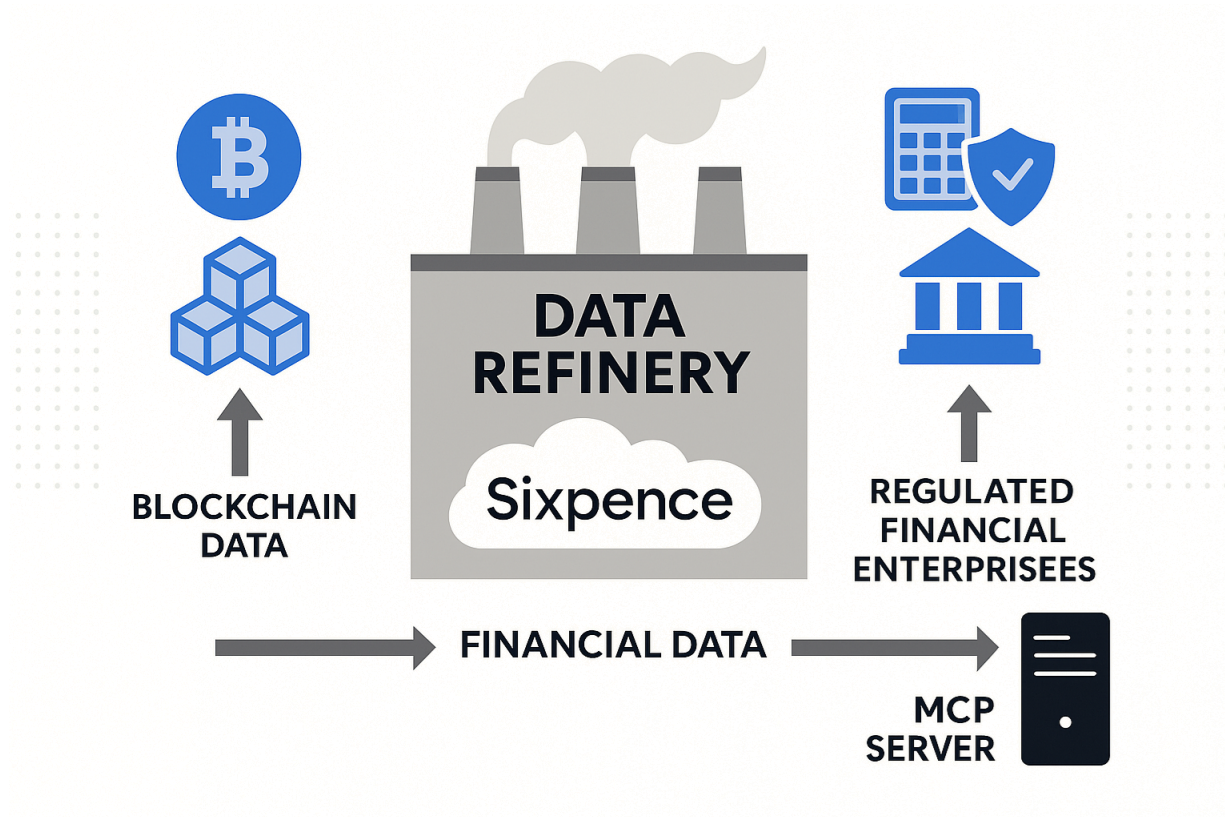
Deep Protocol Complexity

- Smart contract activity (DeFi, NFTs, staking) creates cascades of hidden events.
- Accurate interpretation requires in-depth, protocol-specific decoding.

Manual and Error-Prone Processes

- Reconciliation often involves spreadsheets and fragile scripts.
- Not scalable for enterprise, and non-compliant for audit and regulatory reporting.

The Solution: LedgerCore



LedgerCore is a sovereign, on-premises data platform built for the financial sector.

It connects directly to blockchains and exchanges, transforms raw data into structured, auditable financial records, and exposes it through a unified API – giving institutions full control over performance, compliance, and integration.

With LedgerCore, institutions can ingest, enrich, and operationalize blockchain data at scale – without relying on third-party aggregators or generic analytics tools.

Why LedgerCore is Different

LedgerCore is not just another generic blockchain tool – it is purpose-built for the financial sector.

Unlike third-party SaaS platforms or opaque data aggregators, LedgerCore is

- deployed entirely on-premises, giving institutions full control, sovereignty, and compliance over their digital asset data.
- engineered from the ground up for audit, assurance, and risk use cases. It delivers a level of trust, accuracy, and traceability that financial institutions demand.
- not just technically superior, but enterprise-proven and regulatory-aligned, with implementations for banks, auditors, and global crypto and stock exchanges.

Talking to the Data

LedgerCore has an extensive and growing dataset, unlocking new opportunities for intelligence every day.

To help users access insights easily, LedgerCore includes an **integrated private AI assistant***, allowing secure, **natural language queries** across the system – no coding or SQL required.

The screenshot displays the LedgerCore 'Talk to the Data' interface. At the top, the navigation bar includes 'Dashboard', 'Analytics', 'Talk to Data' (selected), 'Compliance', and 'Reports'. The main header for 'Talk to the Data' says 'Ask questions about blockchain transactions and compliance'. A user query is entered in a blue box: 'Did address 37jKPSmbEGwgfacCr2nayn1wTaqMAbA94Z transact with a sanctioned entity between 2019 and 2021?'. The AI assistant's response, marked with an 'AI' icon, states: 'Yes, 37jKPSmbEGwgfacCr2nayn1wTaqMAbA94Z transacted with OFAC sanctioned entity GARANTEX EUROPE OU, with wallet address 3Lpoy53K625zVeE47ZasiG5jGkAxJ27kh1, on 2019/01/05 14:23 EST. 0.255643 BTC was sent from the sanctioned wallet to 37jKPSmbEGwgfacCr2nayn1wTaqMAbA94Z'. Below this is a 'Transaction Flow Visualization' section showing a flow from 'GARANTEX EUROPE OU' (labeled 'HIGH RISK') to a 'Target Address'. At the bottom, there are two summary boxes: 'Sanctioned Entity' (GARANTEX EUROPE OU, OFAC Listed) and 'Target Address' (Recipient Wallet, Under Review). A search bar at the very bottom prompts the user to 'Ask about transactions, addresses, sanctions, or compliance...' with a 'Send' button.

LC LedgerCore

Dashboard Analytics **Talk to Data** Compliance Reports

Talk to the Data
Ask questions about blockchain transactions and compliance

Did address 37jKPSmbEGwgfacCr2nayn1wTaqMAbA94Z transact with a sanctioned entity between 2019 and 2021?

AI Yes, 37jKPSmbEGwgfacCr2nayn1wTaqMAbA94Z transacted with OFAC sanctioned entity GARANTEX EUROPE OU, with wallet address 3Lpoy53K625zVeE47ZasiG5jGkAxJ27kh1, on 2019/01/05 14:23 EST.

0.255643 BTC was sent from the sanctioned wallet to 37jKPSmbEGwgfacCr2nayn1wTaqMAbA94Z

Transaction Flow Visualization

Transaction flow visualization showing a transaction from a Sanctioned Entity (GARANTEX EUROPE OU) to a Target Address (37jKPSmbEGwgfacCr2nayn1wTaqMAbA94Z).

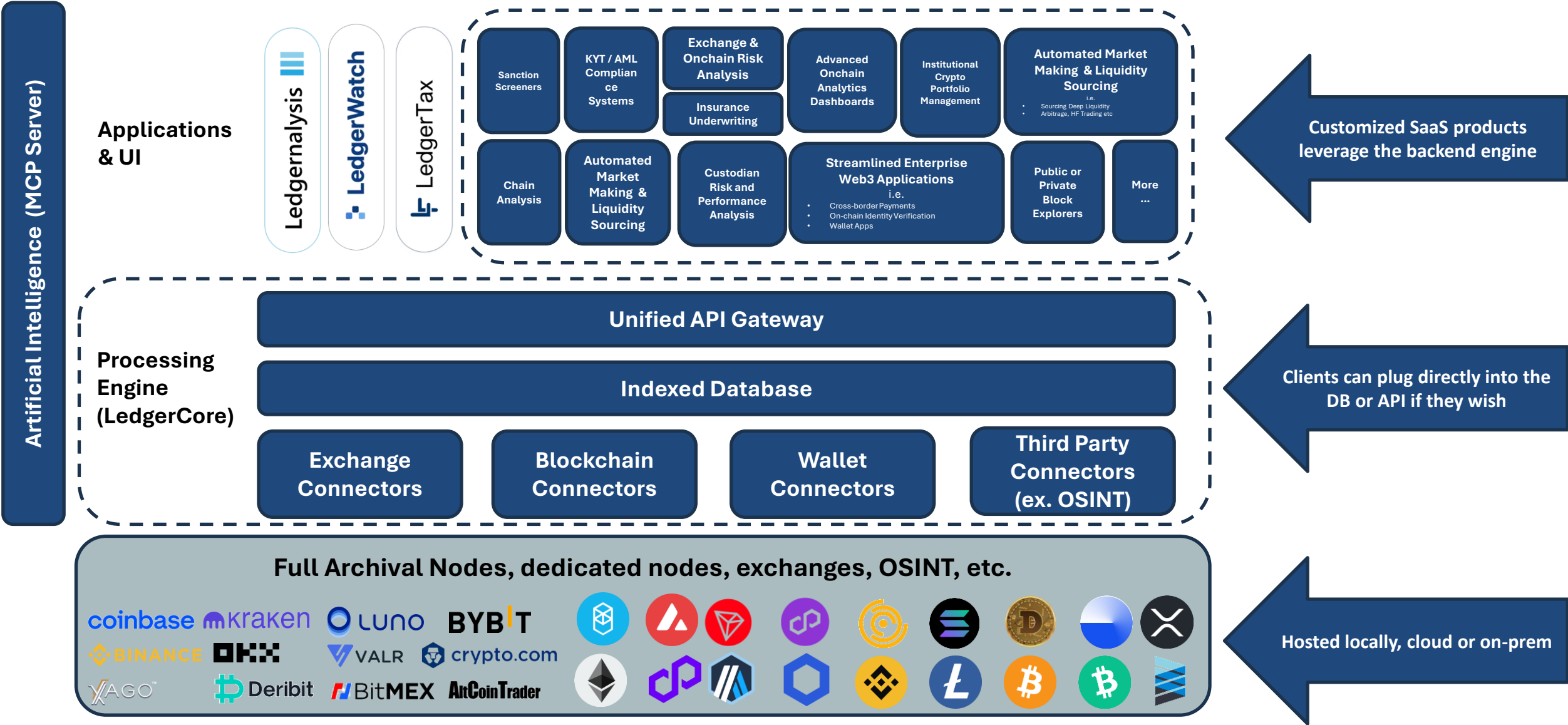
Sanctioned Entity
GARANTEX EUROPE OU
3Lpoy53K625zVeE47ZasiG5jGkAxJ27kh1
OFAC Listed

Target Address
Recipient Wallet
37jKPSmbEGwgfacCr2nayn1wTaqMAbA94Z
Under Review

Ask about transactions, addresses, sanctions, or compliance... **Send**

*Powered by a secure, on-premises LLM orchestration layer (MCP server) for data privacy and control.

Robust Product Architecture



Customisation

LedgerCore is not just a backend engine – it's a flexible platform that can be tailored to fit your team's workflows, user roles, and reporting requirements.

For Compliance & Surveillance

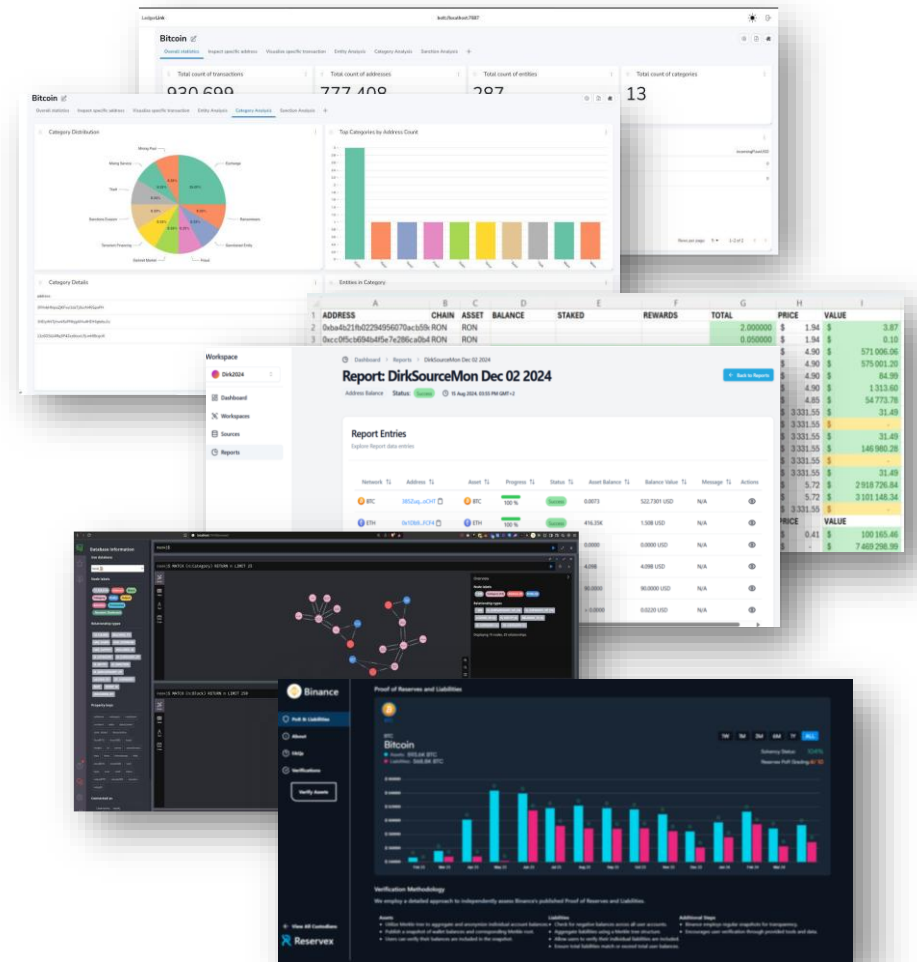
- Trace on-chain activity with labelled entities and relationship graphs
- Monitor stablecoin flows, issuer risk, and behavioral anomalies

For Finance & Audit

- Generate customized accounting reports with portfolio balances, tax methods (e.g. FIFO/LIFO), and cryptographic audit tools

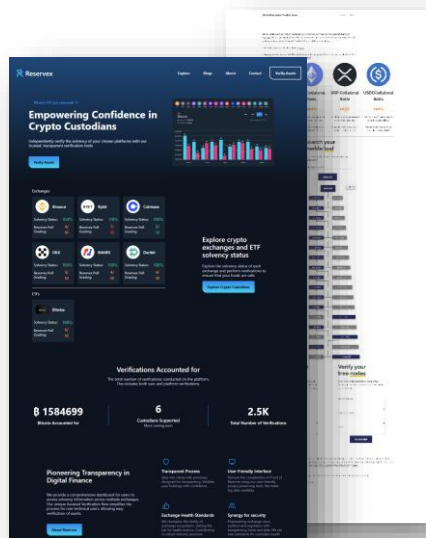
For Strategy & Oversight

- Build dashboards for market surveillance, trading analytics, or regulatory supervision – updated in real time



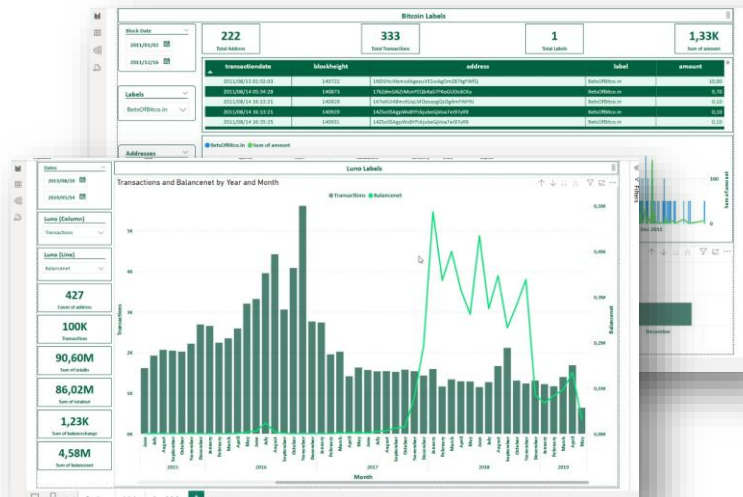
What We've Built

Examples of customized deployments.



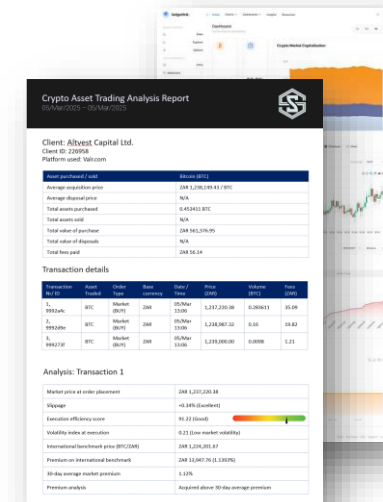
Global Audit Firm

Custom Proof of Reserves dashboard for crypto custodians – fully transparent, cryptographically verifiable attestations



Commercial Bank

PowerBI integration powered by LedgerCore, enabling advanced due diligence on VASP clients and crypto risk monitoring



Stock Exchange

Market surveillance tool for monitoring listed companies with digital asset exposure – tailored alerts and reporting

Use Cases for Goldman

LedgerCore unlocks a wide range of use cases that Goldman can embed into their core systems.

Institutional Risk & Compliance Analyze on-chain behavior, counterparty exposure, and protocol interactions to assess risk, ensure regulatory alignment, and strengthen client onboarding and monitoring.	Audit & Proof of Reserves Enable transparent, cryptographic asset verification for exchanges, stablecoin issuers, custodians, and fund administrators. LedgerCore also hosts a wide variety of cryptographic tools to enhance audit procedures	Market Surveillance & AML Detect manipulative trading, trace illicit flows, and flag interactions with mixers or sanctioned entities through enriched labeling and behavioral risk analytics.	Financial Reporting and Tax Produce precise, time-stamped valuations, gain/loss tracking, and transaction classification to meet accounting standards, tax compliance, and audit requirements.	Digital Asset Reporting-as-a-Service Power recurring reporting services for clients, including regulatory submissions, investor reporting, and operational dashboards – all backed by verified, auditable data.
---	--	---	--	---

→ And more. Contact us to explore our entire data dictionary

Trusted by Leaders in Crypto and Finance

2023

Forvis Mazars & Global Exchanges

Use Case: Proof of Reserves (PoR)

Clients: Binance, Crypto.com, KuCoin

Impact: Delivered first-of-its-kind PoR attestation, enabling public trust in major exchanges.



2024

Coinbase

Use Case: Assurance Infrastructure

Engagement: Development grant recipient

Impact: Funded to develop *Reservex*, an open-source Proof of Reserves toolkit, further validating LedgerCore's role as a foundation for assurance.



2025

Nedbank

Use Case: Institutional Risk Analytics

Client: Top-four South African bank

Impact: Powered a live dashboard to monitor crypto service providers, client behavior, and on-chain risk – built entirely on LedgerCore.



Founded in 2019, SilverSixpence builds institutional-grade blockchain infrastructure with a focus on audit, compliance, and data integrity. Our team combines deep cryptographic expertise with real-world experience delivering regulated solutions for leading financial institutions and exchanges.

→ [Schedule a demo](#)

Sixpence – the team behind crypto audits for Coinbase, Binance, and Kraken.

[Website](#) | [LinkedIn](#) | [X \(Twitter\)](#)

info@sixpence.io

